



TSM Institutional Architecture Blueprint

*Governance, Capital Stewardship,
and Operational Risk Isolation Framework*

Document Control

Version 2.0 | March 2026

Internal Governance Document

Prepared for Institutional Leadership, Strategic Advisors, and Fiduciary Partners

Document Owner: Office of the Chairman, The SAVI Ministries

Governance Note

This document defines the foundational institutional architecture of The SAVI Ministries and is intended to establish the governance, structural, and fiduciary framework under which the organization operates.

The blueprint outlines the organizational design required to steward philanthropic capital responsibly, execute humanitarian and spiritual programs, and maintain disciplined risk management across all operational domains including aviation activities, endowment stewardship, and ministry operations.

This document is intended for internal institutional use by leadership, advisors, and governance bodies of The SAVI Ministries. Portions of this architecture may later inform external donor materials, governance documents, or operational policies, but this blueprint itself functions as an internal structural reference for organizational design.

The architecture described herein is intended to support the long-term growth of The SAVI Ministries, including the responsible stewardship of philanthropic capital associated with a proposed initial fundraising campaign targeting fifty million dollars in donor commitments. The document also establishes the structural principles necessary to scale the organization's mission responsibly as operations expand across humanitarian, aviation, and spiritual service initiatives.

Nothing in this document should be interpreted as legal, tax, or regulatory advice. Final entity structuring, tax treatment, aviation regulatory compliance, fiduciary arrangements, and institutional governance mechanisms must be reviewed and confirmed by qualified legal, tax, aviation regulatory, and fiduciary counsel prior to implementation.

I. Purpose of the Institutional Architecture Blueprint

This document establishes the structural governance architecture of The SAVI Ministries and defines the institutional framework through which the organization intends to conduct its religious, humanitarian, and operational activities.

The purpose of this blueprint is to provide a disciplined organizational structure capable of supporting large scale philanthropic stewardship while preserving the mission integrity of the ministry and protecting long term donor capital. The document outlines the structural separation between mission operations, capital stewardship, and operational risk bearing activities so that each function can be governed under appropriate oversight and risk boundaries.



The architecture described herein is designed to support the responsible management of philanthropic contributions associated with an initial institutional fundraising campaign targeting approximately an initial fifty million dollars in donor commitments. The framework also anticipates the potential expansion of philanthropic capital beyond that level and therefore introduces structural principles intended to remain viable as the ministry grows in scale and geographic reach.

The blueprint further establishes the organizational logic through which three distinct institutional functions will operate.

1. The first function relates to the *operating ministry* responsible for executing the organization's spiritual and humanitarian mission.
2. The second relates to the *stewardship of endowed philanthropic capital* and the governance mechanisms required to safeguard such capital over long time horizons.
3. The third relates to the *isolation and management of aviation related assets* and operational risks associated with humanitarian flight operations.

The intent of this architecture is not to prescribe final legal structures or regulatory determinations, which must ultimately be reviewed by qualified legal and tax counsel. Rather, the document provides the institutional design framework within which those legal structures may be implemented while preserving the integrity of the organization's governance model, fiduciary responsibilities, and donor stewardship obligations.

By defining the structural relationships among mission operations, capital stewardship, and operational risk bearing entities, this blueprint seeks to establish a governance foundation capable of supporting the long-term stability, transparency, and credibility of The SAVI Ministries as it expands its humanitarian and spiritual work.

II. Institutional Definitions

For the purposes of this Institutional Architecture Blueprint, the following terms are defined as they apply within the governance and structural framework of The SAVI Ministries.

Operating Ministry

The Operating Ministry refers to The SAVI Ministries as the central religious and charitable institution responsible for executing the organization's spiritual mission, humanitarian activities, programmatic initiatives, and public engagement with donors and supporters.

Endowment Foundation

The Endowment Foundation refers to The SAVI Ministries Endowment Foundation, the entity established for the purpose of receiving, safeguarding, investing, and stewarding permanent philanthropic capital contributed in support of the long-term mission of The SAVI Ministries.



Endowment Portfolio

The Endowment Portfolio refers to the collective pool of invested assets held under the stewardship of The SAVI Ministries Endowment Foundation and managed in accordance with the organization's Investment Policy Statement.

Investment Policy Statement (IPS)

The Investment Policy Statement is the governing document that establishes the investment philosophy, strategic asset allocation framework, risk management principles, performance objectives, and fiduciary guidelines for the stewardship of endowed assets.

Spending Policy

The Spending Policy refers to the governance framework through which periodic distributions may be made from the endowment portfolio to support the mission activities of The SAVI Ministries while preserving the long term purchasing power of endowed capital.

Aviation Asset Structure

The Aviation Asset Structure refers to the organizational framework through which aircraft ownership and aviation related assets are isolated from the operating ministry and the endowment structure in order to manage operational risk and regulatory obligations.

Aviation Holding Entity

The Aviation Holding Entity refers to the central coordinating entity responsible for the administration, oversight, and governance of aircraft ownership entities, aviation insurance relationships, and aviation related regulatory compliance.

Aircraft Special Purpose Entity (Aircraft SPE)

An Aircraft Special Purpose Entity refers to a dedicated legal entity established for the sole purpose of owning and administering an individual aircraft asset within the aviation structure.

Humanitarian Aviation Operations

Humanitarian Aviation Operations refer to the aviation missions conducted in support of medical transport, humanitarian logistics, and life preserving assistance delivered through the operational programs of The SAVI Ministries.

Institutional Architecture

Institutional Architecture refers to the overall governance, capital stewardship, and operational risk management framework through which The SAVI Ministries organizes its entities, financial flows, and operational responsibilities.



III. Foundational Mission of The SAVI Ministries

The SAVI Ministries exists as a Christian faith-based institution dedicated to serving individuals and communities through a combination of spiritual guidance, humanitarian support, and life preserving assistance delivered through mission aligned operational programs.

The ministry's work is grounded in the belief that spiritual care, compassionate service, and practical humanitarian support are inseparable expressions of Christian faith. The organization therefore seeks to provide both spiritual encouragement and tangible assistance to individuals facing medical hardship, social vulnerability, or circumstances that limit their access to essential resources.

A central component of the ministry's humanitarian activity is the provision of aviation supported assistance designed to facilitate the transport of patients, medical personnel, organs for transplant, and other humanitarian resources when traditional commercial transportation options are unavailable or insufficient. These aviation missions are intended to complement existing healthcare and humanitarian networks by providing access to timely transportation in circumstances where delays may place lives at risk.

Beyond aviation related humanitarian services, the ministry also seeks to engage in charitable initiatives intended to support communities across the Americas through faith centered outreach, health oriented educational initiatives, and collaborative humanitarian partnerships with hospitals, nonprofit organizations, and faith communities.

The spiritual dimension of the ministry's work includes the dissemination of teachings, reflections, and educational materials intended to promote spiritual awareness, faith formation, and the integration of spiritual principles into daily life. These efforts are designed to complement the ministry's humanitarian activities by addressing both the practical and spiritual dimensions of human wellbeing.

The SAVI Ministries operates as a religious institution under the church exemption framework described in Section 508(c)(1)(A) of the Internal Revenue Code. This status recognizes the ministry's character as a faith-based organization engaged in religious and charitable activities conducted in accordance with Christian principles and governance.

The mission described in this section provides the foundational context for the institutional architecture established throughout this document. All governance structures, capital stewardship mechanisms, and operational frameworks described herein are intended to support the responsible and sustainable execution of this mission.

IV. Institutional Structural Overview

The institutional framework of The SAVI Ministries is designed to support the responsible stewardship of philanthropic capital while enabling the organization to conduct complex humanitarian operations in a manner that preserves both mission integrity and financial stability.

To achieve these objectives, the organization intends to operate through a structured multi entity architecture in which distinct institutional functions are separated into clearly defined operational



domains. This separation is intended to establish appropriate governance oversight, contain operational risk, and protect long term donor capital from liabilities associated with operational activities.

Within this framework, the organization's institutional design is organized around three primary structural pillars.

1. The first pillar consists of the **Operating Ministry**. This entity represents the core religious and charitable institution responsible for executing the spiritual and humanitarian mission of The SAVI Ministries. All programmatic activities, mission delivery, spiritual outreach, and public engagement with donors and supporters are conducted through this operating ministry.
2. The second pillar consists of the **Endowment Stewardship Structure**. This component of the architecture is intended to safeguard philanthropic capital contributed by donors who wish to support the long-term sustainability of the ministry's work. Through this structure, endowed capital may be received, invested, and managed under disciplined fiduciary oversight in accordance with the organization's Investment Policy Statement and applicable governance protocols.
3. The third pillar consists of the **Aviation Asset Structure**. Because aviation operations involve distinct operational, regulatory, and liability considerations, the ownership of aircraft and related aviation assets is intended to be organized through a separate structure designed to isolate operational risk from both the operating ministry and any endowed capital entrusted to the organization.

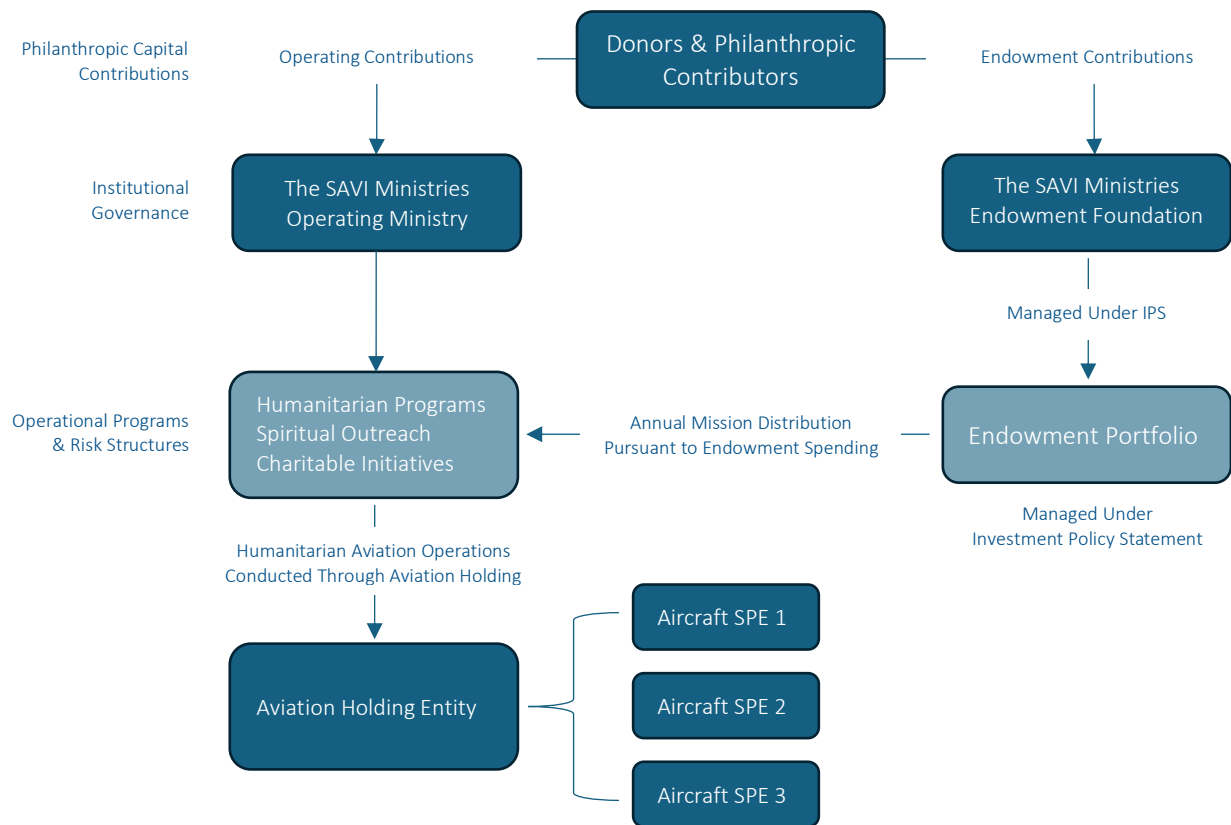
The separation of these three institutional functions allows the ministry to pursue its humanitarian mission while maintaining disciplined financial stewardship and responsible risk management practices. Operational liabilities associated with aviation activities or field operations are therefore prevented from directly exposing the ministry's long term capital resources or philanthropic endowment assets.

This architecture also allows governance oversight to be tailored to the nature of each institutional function. Mission operations remain under the leadership of the ministry's governing body, capital stewardship activities are overseen through appropriate fiduciary governance structures, and aviation asset ownership is managed through entities specifically designed to address aviation regulatory and insurance considerations.

The structural framework described in this section establishes the foundation upon which the remaining components of this blueprint are constructed. Subsequent sections of this document describe the roles, governance mechanisms, and operating protocols associated with each of these institutional pillars.

Institutional Structure Diagram

The diagram below illustrates the structural relationships among the principal entities within The SAVI Ministries institutional architecture, including the operating ministry, the endowment stewardship entity, and the aviation asset structure.



This visual representation summarizes the governance and capital flow framework described throughout this blueprint. The following sections provide detailed explanations of the responsibilities and governance mechanisms associated with each component of the structure.

Institutional Safeguards Framework

The institutional architecture of The SAVI Ministries has been designed to ensure that philanthropic capital entrusted to the organization is stewarded with disciplined governance, structural risk isolation, and long term fiduciary oversight.

Several structural safeguards are embedded within the institutional framework in order to protect donor capital while enabling the organization to conduct complex humanitarian and aviation related mission activities.

The following safeguards form the core protective mechanisms of the institutional architecture.



Structural Separation of Institutional Functions

The architecture separates three primary institutional functions into distinct structural components.

- *Operating Ministry:* Responsible for mission execution, humanitarian programs, spiritual outreach, and operational activities.
- *Endowment Stewardship Structure:* Responsible for safeguarding permanent philanthropic capital through disciplined fiduciary governance and investment management conducted under the Investment Policy Statement.
- *Aviation Asset Structure:* Responsible for the ownership and administration of aircraft assets through dedicated entities designed to isolate aviation operational risk.

This separation ensures that operational liabilities associated with humanitarian activities or aviation operations do not directly expose endowed philanthropic capital.

Endowment Capital Protection

Endowed philanthropic capital contributed to The SAVI Ministries Endowment Foundation is structurally separated from operational activities conducted by the operating ministry.

Endowment assets are invested and managed under the governance of the Investment Policy Statement, which establishes the organization's long term investment philosophy, risk management principles, and asset allocation framework.

Periodic distributions may be made from the endowment portfolio under the organization's adopted spending policy in order to support mission aligned activities while preserving the long-term purchasing power of endowed capital.

Distributions from the endowment portfolio are expected to follow a disciplined spending policy designed to balance mission support with the long-term preservation of endowed capital.

Aviation Liability Isolation

Aircraft ownership and aviation related operational activities are organized through dedicated entities within the aviation asset structure.

Each aircraft is intended to be held through an individual special purpose entity created specifically for the ownership and administration of that aircraft asset.

This structure isolates liability associated with aviation operations so that operational risks remain confined to the relevant aviation entities and do not extend to the operating ministry's institutional assets or the endowment portfolio.

Fiduciary Investment Oversight

The stewardship of endowed capital is supervised through the governance bodies of The SAVI Ministries Endowment Foundation.



Investment activity is conducted in accordance with the organization's Investment Policy Statement and may be implemented through professional investment managers or outsourced chief investment officer arrangements operating under formal investment management agreements.

Custody of endowment assets is expected to be maintained through established institutional financial institutions capable of providing secure asset custody, independent reporting, and professional investment administration.

Governance Accountability

The governing authority of The SAVI Ministries resides with its Chairman and Board of Directors, who are responsible for safeguarding the mission of the organization and ensuring that institutional activities remain aligned with the organization's spiritual and humanitarian objectives.

Specialized governance bodies, including investment oversight committees and operational advisory groups, may assist the governing leadership in supervising the stewardship of capital and the execution of mission programs.

Through these governance mechanisms, the organization seeks to maintain transparency, accountability, and disciplined institutional decision making.

V. The Operating Ministry

The SAVI Ministries serves as the central operating entity through which the organization conducts its religious, humanitarian, and programmatic activities. As the primary institutional body of the organization, the operating ministry is responsible for executing the mission described in this blueprint and for maintaining the public facing identity of the institution.

All mission related initiatives, charitable programs, and spiritual outreach activities are conducted through the operating ministry. This includes the coordination of humanitarian aviation missions, the development and dissemination of spiritual teachings and educational resources, and the implementation of charitable initiatives designed to assist individuals and communities facing medical or social hardship.

The operating ministry also functions as the primary interface between the organization and its supporters. Engagement with donors, volunteers, institutional partners, and collaborating organizations occurs through the ministry's leadership and administrative structures. Through these relationships the ministry communicates its mission, reports on program activities, and mobilizes philanthropic support for its humanitarian and spiritual work.

Governance authority for the operating ministry is exercised through its Chairman and Board of Directors, who are responsible for safeguarding the mission of the organization and ensuring that its activities remain aligned with the spiritual and charitable objectives for which the ministry was established. Leadership oversight includes the adoption of organizational policies, the approval of major operational initiatives, and the supervision of senior management responsible for implementing the ministry's programs.

Within the broader institutional architecture described in this blueprint, the operating ministry serves as the programmatic engine of the organization. It is responsible for the planning and execution of mission



activities, the coordination of operational partnerships with hospitals and humanitarian organizations, and the administration of aviation missions conducted in support of medical transport and humanitarian assistance.

While the operating ministry is responsible for delivering the organization's mission, the structural framework described in this document separates operational activities from long term capital stewardship and aviation asset ownership. This separation ensures that the ministry can pursue its humanitarian work while preserving appropriate safeguards around endowed capital and operational risk exposure.

Through this governance and operational structure, The SAVI Ministries seeks to maintain a disciplined balance between mission driven service and responsible institutional stewardship.

VI. The Endowment Stewardship Entity The SAVI Ministries Endowment Foundation

To preserve the long-term sustainability of the ministry's mission and to safeguard philanthropic capital entrusted by donors, the institutional architecture of The SAVI Ministries contemplates the establishment of a dedicated capital stewardship entity to be known as **The SAVI Ministries Endowment Foundation** (TSM Endowment).

The Endowment Foundation is intended to function as the fiduciary steward of permanent philanthropic capital contributed in support of the long-term mission of The SAVI Ministries. Its primary role is to receive, safeguard, invest, and oversee endowed gifts entrusted by donors who wish to support the enduring work of the ministry.

The creation of TSM Endowment introduces a structural separation between the stewardship of permanent capital and the operational activities of the ministry. This separation is intended to protect endowed assets from operational liabilities while ensuring that philanthropic capital is administered under disciplined fiduciary oversight consistent with institutional endowment practices.

TSM Endowment is expected to operate as a legally distinct nonprofit entity aligned with the mission of The SAVI Ministries. The final legal structure, jurisdiction of incorporation, and tax treatment of the foundation will require confirmation by qualified legal and tax counsel. The purpose of the foundation, however, will remain narrowly defined as the stewardship and oversight of endowed philanthropic capital.

TSM Endowment will not conduct humanitarian missions, aviation operations, or ministry programs directly. Those activities remain the responsibility of the operating ministry. Instead, the responsibilities of the foundation will include the receipt of endowed gifts, the establishment of custodial banking relationships for the safeguarding of capital, the oversight of professional investment management arrangements, and the administration of distributions to the operating ministry in accordance with the organization's adopted spending policy.

The investment management of the endowment will be governed by the Investment Policy Statement adopted for the stewardship of endowed assets. The IPS defines the investment philosophy, risk management framework, asset allocation discipline, and long-term capital preservation principles that guide the management of the endowment portfolio.



Through this governance framework, TSM Endowment functions as the fiduciary guardian of permanent philanthropic capital dedicated to the long-term sustainability of the ministry's humanitarian and spiritual mission. Periodic distributions generated under the endowment's spending policy may be directed to the operating ministry to support mission programs, humanitarian aviation activities, and other charitable initiatives consistent with donor intent and the mission of the organization.

The structural separation established through the creation of TSM Endowment represents one of the central safeguards within the institutional architecture of the organization. By isolating the stewardship of endowed capital from operational activities, the organization seeks to ensure that philanthropic contributions intended for long term mission support are preserved, prudently managed, and transparently governed for generations to come.

VII. Endowment Governance and Investment Oversight

The stewardship of endowed philanthropic capital entrusted to The SAVI Ministries Endowment Foundation requires a governance framework capable of ensuring disciplined fiduciary oversight, transparent reporting, and prudent long term investment management.

Oversight of the endowment portfolio will be conducted through the governance structures of the Endowment Foundation, which will operate under the strategic guidance of its governing board and any fiduciary committees established for the supervision of capital stewardship activities. These governance bodies will be responsible for ensuring that all investment activity remains aligned with the principles and constraints established within the organization's Investment Policy Statement.

The Investment Policy Statement serves as the governing document for the management of endowed assets. The IPS defines the investment philosophy of the organization, establishes the strategic asset allocation framework, identifies risk management principles, and outlines the long-term capital preservation objectives associated with the endowment. It also provides the parameters within which external investment managers or outsourced chief investment officer arrangements may operate.

To support the implementation of the IPS, the Endowment Foundation may establish an Investment Committee composed of individuals with relevant experience in institutional asset management, financial oversight, and fiduciary governance. The role of the Investment Committee is to provide structured oversight of the endowment portfolio, review investment performance, evaluate portfolio risk exposure, and recommend strategic adjustments consistent with the long-term objectives of the endowment.

The Investment Committee does not replace the governing authority of the Endowment Foundation's board but functions as an advisory and oversight body responsible for monitoring the implementation of the IPS and reporting its findings and recommendations to the governing board.

Custody of endowment assets is expected to be maintained through established institutional financial institutions capable of providing secure asset custody, independent reporting, and professional investment platform services. The selection of custodial banks, investment managers, or outsourced investment management providers will be subject to appropriate diligence and approval by the governing bodies responsible for endowment oversight.



External investment managers or OCIO providers may be engaged to manage the investment portfolio within the parameters defined by the IPS. Any such arrangements must operate under written investment management agreements that clearly define authority, reporting obligations, performance expectations, and risk management responsibilities.

The Endowment Foundation will maintain periodic reporting practices designed to ensure transparency and accountability in the stewardship of endowed capital. These reports may include portfolio performance summaries, asset allocation reviews, risk assessments, and compliance evaluations relative to the IPS. Such reporting will be provided to the governing bodies responsible for fiduciary oversight and may also inform stewardship communications with donors where appropriate.

Through this governance structure, the Endowment Foundation seeks to maintain a disciplined balance between capital preservation and mission support. The objective of the investment program is to safeguard the purchasing power of endowed capital over long time horizons while generating sustainable distributions capable of supporting the humanitarian and spiritual work of The SAVI Ministries.

Endowment Governance Responsibilities

To reinforce clear fiduciary accountability within the stewardship of endowed philanthropic capital, the governance architecture of The SAVI Ministries Endowment Foundation assigns defined responsibilities across the principal participants involved in the management and oversight of the endowment portfolio.

The following framework summarizes the primary governance roles associated with the stewardship and administration of endowed capital.

Governance Body	Primary Responsibility
Chairman of The SAVI Ministries	Provides overarching institutional leadership and ensures that the stewardship of endowed capital remains aligned with the mission and long-term vision of the ministry.
Board of The SAVI Ministries Endowment Foundation	Exercises fiduciary oversight over the stewardship of endowed capital and ensures adherence to the Investment Policy Statement governing the endowment portfolio.
Investment Committee	Reviews portfolio strategy, monitors investment performance, evaluates risk exposure, and provides recommendations regarding investment management.
OCIO or External Investment Managers	Implement the investment strategy defined in the Investment Policy Statement and manage portfolio assets within approved investment guidelines.



Custodian Financial Institution	Maintains custody of endowment assets, provides independent reporting, and ensures secure administration of portfolio holdings.
Operating Ministry	Receives distributions authorized under the endowment spending policy to support mission aligned humanitarian and spiritual programs.

VIII. Aviation Asset Structure

Humanitarian aviation operations represent an important component of the mission activities contemplated by The SAVI Ministries. At the same time, aviation operations introduce distinct operational, regulatory, and liability considerations that require careful structural planning within the institutional architecture of the organization.

For this reason, the institutional design of The SAVI Ministries contemplates the separation of aviation asset ownership from both the operating ministry and the endowment stewardship structure. This separation is intended to isolate operational liabilities associated with aircraft ownership and flight operations from the broader institutional assets of the ministry and from any endowed philanthropic capital managed through The SAVI Ministries Endowment Foundation.

Under this framework, aircraft and aviation related assets may be organized through a structured aviation holding architecture. A central aviation holding entity may be established to coordinate matters relating to aircraft administration, insurance oversight, regulatory compliance, and the management of relationships with aviation service providers.

Within this aviation structure, each individual aircraft may be owned through a dedicated special purpose entity created specifically for the ownership of that aircraft. Each aircraft entity would hold legal title to the corresponding aircraft and would maintain appropriate insurance coverage associated with the ownership and operation of that asset.

The use of separate aircraft entities is intended to isolate liability associated with the operation or ownership of a specific aircraft so that any claims, operational incidents, or regulatory matters connected to one aircraft do not directly expose other aviation assets or the broader institutional structure of the ministry.

Operational use of the aircraft may occur through contractual arrangements between the operating ministry and the relevant aircraft ownership entities. These arrangements may include leasing structures, operational agreements, or other contractual mechanisms designed to define operational responsibilities, insurance obligations, and risk allocation among the relevant parties.

The specific legal form of the aviation holding entity and aircraft ownership entities will require review by qualified aviation counsel, insurance advisors, and regulatory specialists. Such review is necessary to ensure that aircraft registration requirements, aviation regulatory compliance obligations, operational control standards, and insurance coverage arrangements are appropriately addressed within the final structure.



The aviation asset structure described in this section is intended to establish a disciplined risk boundary within the broader institutional architecture of The SAVI Ministries. By isolating aircraft ownership within dedicated entities and separating aviation operations from both the operating ministry and the endowment stewardship structure, the organization seeks to ensure that humanitarian aviation activities can be conducted responsibly while protecting the long-term financial stability of the institution.

Aviation Liability Isolation

Within the institutional architecture of The SAVI Ministries, aviation related assets and operational activities are intentionally separated from both the operating ministry's core institutional assets and from the permanent capital stewarded by The SAVI Ministries Endowment Foundation. Aircraft ownership is expected to be organized through dedicated special purpose entities within the aviation asset structure so that liabilities associated with aircraft ownership, operation, or regulatory compliance remain confined to those entities. Under this framework, no aircraft assets or aviation operational liabilities are intended to be held directly by the Endowment Foundation or within the endowment portfolio. This structural separation is designed to ensure that endowed philanthropic capital remains fully protected from aviation related risk exposure while allowing humanitarian aviation missions to be conducted responsibly and in compliance with applicable aviation regulations and insurance requirements.

IX. Flow of Capital and Resources

The institutional architecture of The SAVI Ministries is designed to ensure that philanthropic contributions are received, stewarded, and deployed through clearly defined financial pathways that support transparency, fiduciary discipline, and donor trust.

Within this framework, philanthropic capital may enter the organization through two principal channels depending on the intent of the donor and the nature of the contribution. Some donors may choose to support the long term sustainability of the ministry through endowed gifts, while others may provide contributions intended to support current mission activities and humanitarian programs.

Donors who wish to support the enduring mission of the organization may contribute endowed gifts to **The SAVI Ministries Endowment Foundation**. Contributions directed to the Endowment Foundation are intended to become part of the permanent capital base of the institution. These assets are invested and stewarded in accordance with the Investment Policy Statement governing the endowment.

Under the endowment framework, the capital contributed by donors remains preserved within the endowment portfolio, while periodic distributions generated under the spending policy may be directed to the operating ministry to support mission activities. This structure allows philanthropic capital to support the ministry's work over long time horizons while maintaining disciplined stewardship of donor funds.

Other donors may choose to support the ministry's work through contributions made directly to **The SAVI Ministries operating entity**. These gifts may be used to fund humanitarian missions, charitable outreach initiatives, spiritual education programs, and other operational activities conducted by the ministry.

Through this dual structure, donors are able to align their contributions with their philanthropic intent. Some supporters may wish to provide long term capital intended to sustain the organization for generations, while others may wish to support immediate humanitarian needs and mission activities.



Resources distributed from the Endowment Foundation to the operating ministry may be used to support the execution of mission programs, including humanitarian aviation activities conducted by the ministry or its affiliated operational structures. Where aviation assets are owned through dedicated aircraft entities within the aviation asset structure described earlier in this blueprint, operational funding may flow from the operating ministry to those entities through contractual arrangements governing aircraft use, maintenance responsibilities, and operational support.

This financial architecture ensures that the stewardship of endowed capital, the execution of mission programs, and the ownership of aviation assets remain clearly separated within the institutional structure. Such separation strengthens the transparency of financial flows and reinforces the safeguards designed to protect both donor capital and the long-term stability of the organization.

X. Capital Flow Governance Framework

The institutional architecture of The SAVI Ministries establishes a structured financial pathway designed to ensure that philanthropic capital is stewarded responsibly and deployed in a manner consistent with donor intent, fiduciary discipline, and long-term mission sustainability.

Within this framework, philanthropic contributions may enter the organization through two primary channels depending on the intention of the donor and the nature of the contribution.

Mission Support Contributions

Some donors may choose to provide contributions intended to support the current mission activities of The SAVI Ministries. These contributions are made directly to the operating ministry and may be used to support humanitarian programs, spiritual outreach initiatives, aviation mission operations, and other charitable activities conducted by the ministry.

These resources are deployed in support of the organization's ongoing mission work and are administered through the financial and governance oversight of the operating ministry.

Endowed Philanthropic Capital

Other donors may choose to provide contributions intended to support the long-term sustainability of the ministry's mission through permanent philanthropic capital. Such contributions are directed to The SAVI Ministries Endowment Foundation.

Assets contributed to the Endowment Foundation are incorporated into the endowment portfolio and managed in accordance with the organization's Investment Policy Statement. These assets are intended to remain preserved within the endowment portfolio while being invested under disciplined fiduciary oversight.

Endowment Distribution Framework

Under the governance framework of the Endowment Foundation, periodic distributions may be made from the endowment portfolio in accordance with the organization's adopted spending policy. These distributions may be directed to the operating ministry to support humanitarian programs, aviation



missions, spiritual outreach initiatives, and other charitable activities aligned with the mission of The SAVI Ministries.

Operational Resource Deployment

Resources received by the operating ministry may be deployed to support mission programs directly or may be allocated to operational structures associated with the ministry's humanitarian activities. Where aviation operations require the use of aircraft assets held within the aviation asset structure, operational resources may flow through contractual arrangements between the operating ministry and the relevant aviation entities responsible for aircraft ownership and administration.

Institutional Safeguards

This structured capital flow framework ensures that endowed philanthropic capital, mission operations, and aviation asset ownership remain institutionally separated. Through this separation, The SAVI Ministries seeks to safeguard long term donor capital, maintain transparent financial pathways, and preserve the financial stability of the organization as its humanitarian and spiritual mission expands.

XI. Governance Framework

The governance structure of The SAVI Ministries is designed to ensure that the organization operates with disciplined oversight, clear lines of authority, and transparent accountability consistent with the stewardship responsibilities associated with philanthropic institutions.

The primary governing authority of the organization resides with the Chairman and the Board of Directors of The SAVI Ministries. The Board is responsible for safeguarding the mission of the organization, overseeing the strategic direction of the ministry, and ensuring that all institutional activities remain aligned with the organization's spiritual, humanitarian, and charitable objectives.

The Board of Directors exercises oversight over the operating ministry and retains ultimate responsibility for approving major institutional decisions, including the adoption of governance policies, authorization of major operational initiatives, and the supervision of senior leadership responsible for executing the ministry's programs.

Within the broader institutional architecture, distinct governance mechanisms may also operate to supervise specific components of the organization's structure. The SAVI Ministries Endowment Foundation, for example, may maintain its own governing board or fiduciary oversight body responsible for supervising the stewardship of endowed capital and ensuring that investment activities remain consistent with the Investment Policy Statement and the fiduciary principles governing the endowment.

Similarly, specialized committees may be established to support the oversight responsibilities of the governing bodies. An Investment Committee may assist with the review of portfolio performance, evaluation of investment managers, and monitoring of compliance with the IPS. These committees operate in an advisory or oversight capacity and report their findings to the governing authority responsible for final decision making.

Oversight of aviation related activities will be conducted through the leadership structure responsible for the ministry's aviation operations and through any governance mechanisms established to supervise



aviation safety, regulatory compliance, and operational risk management. The design of such oversight structures will require consultation with aviation regulatory specialists and insurance advisors to ensure that governance practices are consistent with applicable aviation standards.

The governance framework of The SAVI Ministries also contemplates the use of independent financial reviews and transparent reporting practices to reinforce institutional accountability. Financial reporting associated with the ministry's operations and the stewardship of endowed capital may be subject to periodic review processes designed to provide assurance to governing bodies, donors, and institutional partners regarding the responsible management of organizational resources.

Through this governance framework, The SAVI Ministries seeks to maintain an institutional culture grounded in stewardship, transparency, and disciplined decision making. The governance structures described in this section are intended to support the long-term credibility of the organization while ensuring that leadership remains accountable to the mission, to donors, and to the communities served.

XII. Institutional Risk Governance

The institutional architecture of The SAVI Ministries has been designed with the explicit objective of managing and isolating the various forms of risk that may arise from the organization's activities. Because the ministry operates across multiple domains including humanitarian operations, aviation activity, capital stewardship, and public engagement, a disciplined risk governance framework is necessary to ensure long term institutional stability.

The structural design of the organization separates mission operations, endowment stewardship, and aviation asset ownership into distinct institutional components. This separation creates natural risk boundaries that protect philanthropic capital while allowing the ministry to pursue complex humanitarian activities.

Within this framework, the organization recognizes several principal domains of institutional risk.

Mission and Programmatic Risk

Mission related risk arises from the operational execution of humanitarian programs, spiritual outreach initiatives, and charitable activities conducted by the ministry. Governance oversight, internal operational review processes, and mission aligned leadership supervision are intended to ensure that programs remain consistent with the organization's values, capabilities, and resources.

Investment and Capital Stewardship Risk

Investment risk relates to the stewardship of endowed philanthropic capital managed through The SAVI Ministries Endowment Foundation. The Investment Policy Statement establishes the risk management framework governing asset allocation, portfolio diversification, liquidity management, and long term capital preservation objectives.

Oversight of investment activity is conducted through the governance bodies responsible for supervising the endowment portfolio, including the governing board of the Endowment Foundation and any Investment Committee established to review portfolio strategy and performance.



Aviation Operational Risk

Aviation related activities introduce specialized operational and regulatory risks associated with aircraft ownership and flight operations. The aviation asset structure described in this blueprint isolates aircraft ownership within dedicated entities and separates aviation operations from both the operating ministry and the endowment stewardship structure.

This architecture is intended to limit liability exposure while allowing humanitarian aviation missions to be conducted in a responsible and regulated manner.

Regulatory and Compliance Risk

The activities of The SAVI Ministries must operate within the legal and regulatory frameworks governing religious institutions, charitable organizations, aviation operations, and nonprofit financial stewardship. Appropriate legal counsel, regulatory advisors, and compliance oversight mechanisms will be engaged as necessary to ensure that the organization maintains compliance with applicable legal and regulatory requirements.

Reputational and Stewardship Risk

Organizations entrusted with philanthropic capital must maintain the confidence of donors, partners, and the communities they serve. The governance framework described in this blueprint seeks to protect the reputation of The SAVI Ministries through transparent governance practices, responsible stewardship of resources, and disciplined oversight of institutional decision making.

Risk Governance Philosophy

The risk governance approach adopted within this institutional architecture is based on the principle that risk should be identified, isolated, and managed through structural design rather than addressed solely through operational policy.

By separating mission operations, capital stewardship, and aviation asset ownership into distinct institutional components, The SAVI Ministries seeks to ensure that operational risks associated with one domain do not unnecessarily expose other elements of the organization's structure.

Through this framework the ministry aims to maintain operational flexibility while preserving the long term stability, credibility, and financial integrity of the institution.

XIII. Founder Leadership and Reserved Authority

The governance structure of The SAVI Ministries recognizes the unique role of its founding leadership in establishing the spiritual vision, mission direction, and institutional purpose of the organization.

Accordingly, the Chairman of The SAVI Ministries serves as the founding spiritual and institutional leader of the organization and holds the position of Chairman for life unless voluntarily relinquished or otherwise modified through a formal amendment to the governing documents of the ministry.

In recognition of the founder's role in establishing and stewarding the mission of the organization, the governance framework may grant the Chairman certain reserved authorities within the institutional



decision-making structure. These authorities may include the ability to override or supersede board level decisions in matters that materially affect the mission integrity, strategic direction, or institutional identity of The SAVI Ministries.

The precise scope of these reserved authorities should be defined within the governing bylaws of the organization and may include supermajority voting provisions or founder control mechanisms designed to ensure that the mission and guiding principles of the ministry remain aligned with its founding vision.

These provisions are intended to preserve continuity of leadership, protect the spiritual and humanitarian mission of the organization, and maintain institutional stability as the ministry grows in scale and operational complexity.

XIV. Institutional Integrity and Donor Stewardship

The SAVI Ministries recognizes that philanthropic contributions entrusted to the organization represent a profound responsibility. Individuals, families, and institutions who choose to support the mission of the ministry do so with the expectation that their contributions will be managed with integrity, prudence, and transparency.

The institutional architecture described throughout this blueprint has been designed to uphold these responsibilities by establishing clear governance structures, disciplined financial stewardship, and defined boundaries between mission operations, capital stewardship, and operational risk bearing activities.

The separation between the operating ministry, The SAVI Ministries Endowment Foundation, and the aviation asset structure reflects a deliberate effort to ensure that donor capital is protected from operational exposure while remaining available to support the ministry's humanitarian and spiritual work. Through this structure the organization seeks to safeguard the long-term sustainability of its mission while maintaining responsible oversight of all resources entrusted to it.

The stewardship of endowed philanthropic capital carries particular responsibility. Contributions directed to the Endowment Foundation are intended to support the ministry's work across long time horizons, and therefore require careful preservation of capital, disciplined investment oversight, and transparent governance. The investment framework established through the organization's Investment Policy Statement provides the structural foundation for this stewardship responsibility.

In addition to financial discipline, The SAVI Ministries is committed to maintaining transparency in its reporting practices and accountability in its governance processes. Periodic financial reporting, internal governance oversight, and independent review processes where appropriate serve to reinforce the integrity of the organization's stewardship practices.

Institutional credibility is essential for organizations entrusted with philanthropic capital. For this reason, the governance structures described in this blueprint seek to ensure that leadership decisions are guided by a consistent commitment to responsible stewardship, mission alignment, and ethical conduct.

The long-term objective of this institutional framework is to support the enduring mission of The SAVI Ministries while preserving the trust placed in the organization by donors, partners, and the communities it seeks to serve.



Through disciplined governance, careful stewardship of capital, and responsible operational management, The SAVI Ministries intends to build an institutional platform capable of sustaining humanitarian service and spiritual outreach for generations to come.

This institutional architecture blueprint may evolve over time as legal structuring, regulatory review, and governance practices develop, but the core principles of mission integrity, capital stewardship, and risk isolation will remain foundational to the organization.